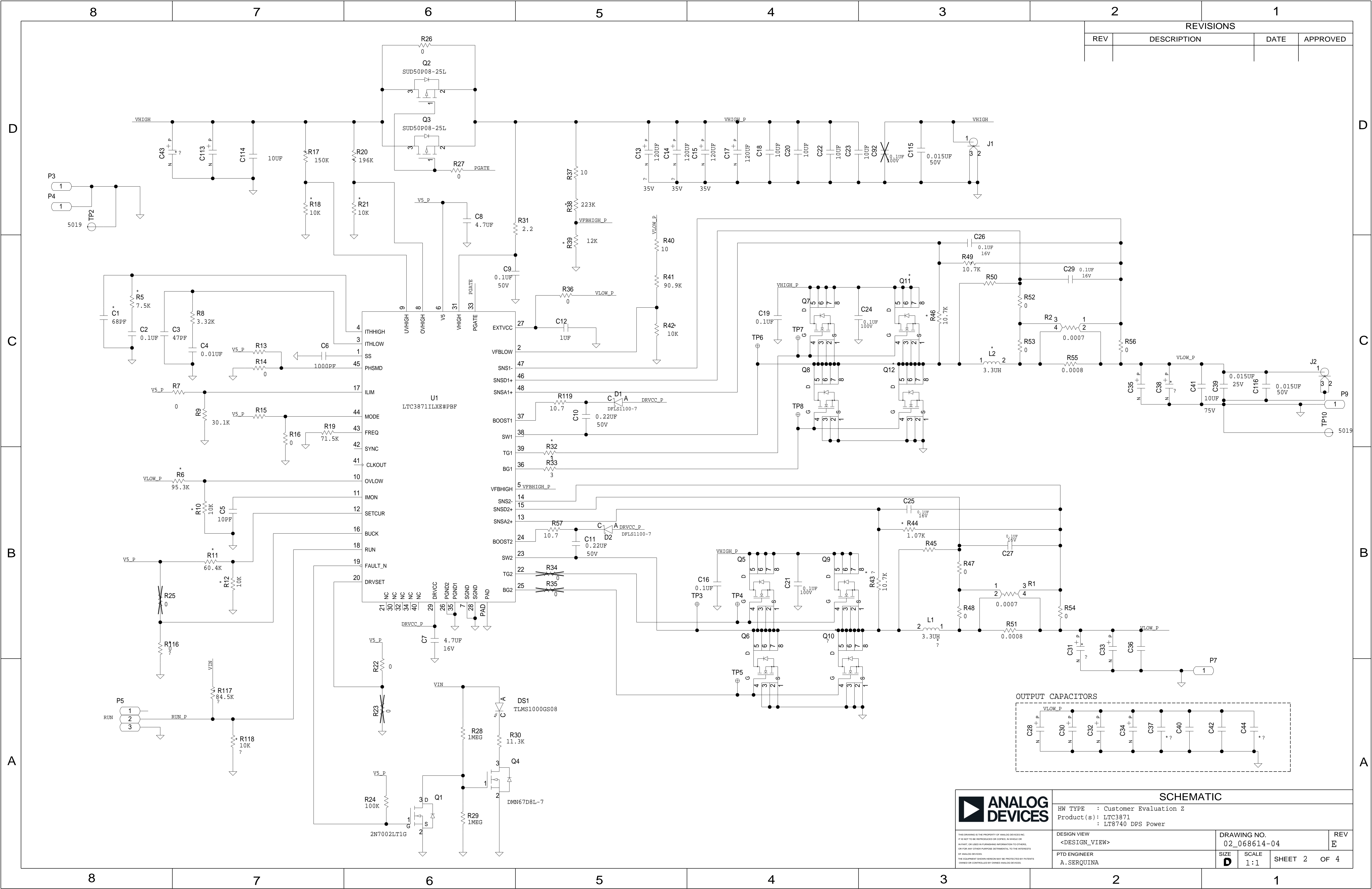
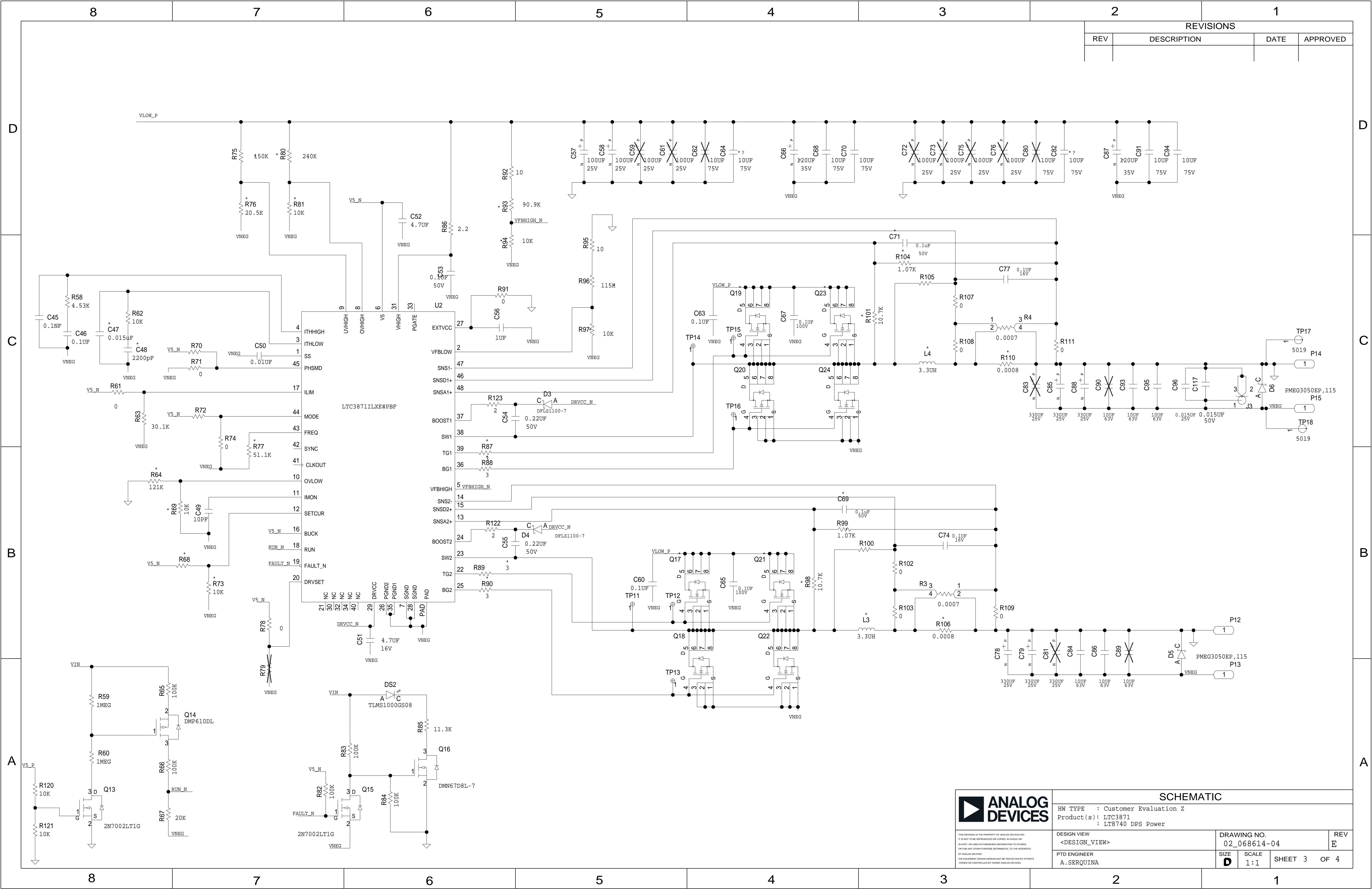


8		7		6		5		4		3		2		1	
THIS DRAWING IS THE PROPERTY OF ANALOG DEVICES INC. IT IS NOT TO BE REPRODUCED OR COPIED, IN WHOLE OR IN PART, OR USED IN FURNISHING INFORMATION TO OTHERS, OR FOR ANY OTHER PURPOSE DETRIMENTAL TO THE INTERESTS OF ANALOG DEVICES. THE EQUIPMENT SHOWN HEREON MAY BE PROTECTED BY PATENTS OWNED OR CONTROLLED BY ANALOG DEVICES.						JUMPER TABLE			REVISIONS						
RELAY CONTROL CHART						JP#	ON	OFF							
						1									
						2									
						3									
						4									
						5									
						* SEE ASSEMBLY INSTRUCTIONS									
NOTE: PLEASE REFER BELOW DRAWING NO. TO CORRESPONDING MODEL NAME															
02_068614-01:						EV-DPS-PWRBD1Z VPOS=+17.5V; VNEG=-17.5V; IDUT = Â±20A									
02_068614-02:						EV-DPS-PWRBD2Z VPOS=+32.5V; VNEG=-3V; IDUT = Â±20A									
02_068614-03:						EV-DPS-PWRBD4Z VPOS=+9V; VNEG=-5.5V; IDUT = Â±20A									
02_068614-04:						EV-DPS-PWRBD3Z VPOS=+23.5V; VNEG=-15V; IDUT = Â±16A									
02_068614-06:						EV-DPS-PWRBD5Z VPOS=+30V; VNEG=-5V; IDUT = Â±20A									
SCHEMATIC															
P.O SPEC.						BK/BD SPEC.		SOCKET OEM		OEM PART#		HANDLER			
8		7		6		5		4		3		2		1	





REVISIONS			
REV	DESCRIPTION	DATE	APPROVED

SCHEMATIC			
HW TYPE : Customer Evaluation Z			
Product(s) : LTC3871			
: LT8740 DPS Power			
DESIGN VIEW	DRAWING NO.		REV
<DESIGN_VIEW>	02_068614-04		E
PTD ENGINEER	SIZE	SCALE	SHEET
A.SERQUINA	D	1:1	3 OF 4

